

**Report No.:** 180259259a 001

Page 1 of 39

**Client:** FOXESS CO., LTD.

**Contact Information:** No.939, Jinhai Third Road, New Airport Industry Area, Longwan District,  
Wenzhou, 325025 Zhejiang P.R. China

**Identification/** Storage Inverter

**Model No(s):** H1-6.0-E-G2

**Condition at delivery:** Test item complete and undamaged.

**Sample Receiving date:** 2023-05-06, 2023-05-22

**Testing Period:** 2023-05-06 to 2023-05-24

**Place of testing:** Chemical laboratory Ningbo

**Test Specification:**

**Test result:**

Customer's requirement:

- |   |      |
|---|------|
| 1. According to RoHS (recast): Restriction of the Use of Certain Hazardous Substances in Electrical and Electronic Equipment, 2011/65/EU Annex II and its amendment | PASS |
|---|------|

**Other information:**

Reference model No.(s): AC1-3.0-E-G2, AC1-3.7-E-G2, AC1-4.6-E-G2, AC1-5.0-E-G2, AC1-6.0-E-G2, AC1-4.6-E1-G2, AC1-5.0-E1-G2, H1-3.0-E-G2, H1-3.7-E-G2, H1-4.6-E-G2, H1-5.0-E-G2, H1-4.6-E1-G2, H1-5.0-E1-G2

For and on behalf of  
TÜV Rheinland/CCIC (Ningbo) Co., Ltd.



2023-05-24

Dream Wang / Manager

*Date*

*Name/Position*

Sample information is provided by customer. Test result is drawn according to the kind and extent of tests performed.

This test report relates to the above mentioned test sample. Without permission of the test center this test report is not permitted to be duplicated in extracts. This test report does not entitle to carry any safety mark on this or similar products.

"Decision Rule" document announced in our website (<https://www.tuv.com/landingpage/en/qm-gcn/>) describes the statement of conformity and its rule of enforcement for test results are applicable throughout this test report.

**Test Report No.: 180259259a 001**

Page 2 of 39

**Material List:**

Item: Storage Inverter  
H1-6.0-E-G2

Material No.	Material	Color	Location
M001	Metal	silver	refer to photo
M002	Coating	white	refer to photo
M003	Glue	white	refer to photo
M004	Glue	transparent	refer to photo
M005	Plastic + adhesive	multi	refer to photo
M006	Plastic + adhesive	yellow+black	refer to photo
M007	Plastic	black	refer to photo
M008	Plastic	transparent	refer to photo
M009	Plastic	black	refer to photo
M010	Foam + adhesive	black	refer to photo
M011	Metal	silver	refer to photo
M012	Electronic components	black	refer to photo
M013	Plastic	black	refer to photo
M014	Plastic	white	refer to photo
M015	Plastic + adhesive	yellow	refer to photo
M016	Plastic	black	refer to photo
M017	Plastic	black	refer to photo
M018	Metal	silver	refer to photo
M019	PCB board	green	refer to photo
M020	Solder	silver	refer to photo
M021	Plastic	white	refer to photo
M022	Metal	silver	refer to photo
M023	Electronic components	silver	refer to photo
M024	Electronic components	black	refer to photo
M025	Electronic components	black	refer to photo
M026	Plastic	grey	refer to photo
M027	Electronic components	black	refer to photo
M028	Electronic components	black	refer to photo

**Test Report No.: 180259259a 001**

Page 3 of 39

M029	Electronic components	black	refer to photo
M030	Paper	white	refer to photo
M031	Plastic	black	refer to photo
M032	Metal	goldeb	refer to photo
M033	Electronic components	black	refer to photo
M034	Electronic components	silver+orange	refer to photo
M035	Electronic components	black	refer to photo
M036	Electronic components	black	refer to photo
M037	Electronic components	brown	refer to photo
M038	Solder	silver	refer to photo
M039	PCB board	green	refer to photo
M040	Electronic components	orange	refer to photo
M041	Glue	black	refer to photo
M042	Metal + coating	black	refer to photo
M043	Metal	silver	refer to photo
M044	Paper	white	refer to photo
M045	Paper	dark green	refer to photo
M046	Glass	transparent	refer to photo
M047	Plastic	black	refer to photo
M048	Plastic	white	refer to photo
M049	Plastic	silver	refer to photo
M050	Plastic	black	refer to photo
M051	Plastic	transparent	refer to photo
M052	Plastic + adhesive	black	refer to photo
M053	Solder	silver	refer to photo
M054	PCB board	green	refer to photo
M055	Plastic	grey	refer to photo
M056	Plastic	grey	refer to photo
M057	Electronic components	white	refer to photo
M058	Electronic components	light red-orange	refer to photo
M059	Plastic	dark grey	refer to photo
M060	Electronic components	grey	refer to photo

**Test Report No.: 180259259a 001**

Page 4 of 39

M061	Plastic + adhesive	light yellow	refer to photo
M062	Plastic + adhesive	yellow	refer to photo
M063	PCB board	yellow	refer to photo
M064	Electronic components	black	refer to photo
M065	Electronic components	black	refer to photo
M066	Plastic	black	refer to photo
M067	PCB board	green	refer to photo
M068	Plastic	white	refer to photo
M069	Electronic components	dark red	refer to photo
M070	Plastic	white	refer to photo
M071	Magnet	brown	refer to photo
M072	Metal	copper	refer to photo
M073	Plastic	red-orange	refer to photo
M074	Glue	white	refer to photo
M075	Plastic	black	refer to photo
M076	Magnet	black	refer to photo
M077	Magnet	black	refer to photo
M078	Plastic	black	refer to photo
M079	Metal	copper	refer to photo
M080	Metal	copper	refer to photo
M081	Magnet	dark green	refer to photo
M082	Plastic + adhesive	yellow	refer to photo
M083	Electronic components	cyan-blue	refer to photo
M084	Magnet	white	refer to photo
M085	Glue	black	refer to photo
M086	Plastic	black	refer to photo
M087	Plastic	dark cyan	refer to photo
M088	Metal	copper	refer to photo
M089	Plastic	white	refer to photo
M090	Plastic	black	refer to photo
M091	Metal	silver	refer to photo
M092	Metal	silver	refer to photo

**Test Report No.: 180259259a 001**

Page 5 of 39

M093	Electronic components	silver	refer to photo
M094	Electronic components	dark green	refer to photo
M095	Electronic components	white+green	refer to photo
M096	Solder	silver	refer to photo
M097	Solder	silver	refer to photo
M098	Electronic components	black	refer to photo
M099	Plastic	black	refer to photo
M100	PCB board	green	refer to photo
M101	Plastic	black	refer to photo
M102	Plastic	brown	refer to photo
M103	Plastic	yellow	refer to photo
M104	Metal	silver	refer to photo
M105	Metal	silver	refer to photo
M106	Coating	grey	refer to photo
M107	Metal	silver	refer to photo
M108	Foam + adhesive	black	refer to photo
M109	Metal	silver	refer to photo
M110	Plastic	black	refer to photo
M111	Plastic	black	refer to photo
M112	Plastic	green	refer to photo
M113	Magnet	green	refer to photo
M114	Magnet	light green	refer to photo
M115	Plastic	black	refer to photo
M116	Plastic	grey	refer to photo
M117	Plastic	pink	refer to photo
M118	Plastic	black	refer to photo
M119	Plastic	black	refer to photo
M120	Plastic	black	refer to photo
M121	Plastic	black	refer to photo
M122	Plastic	black	refer to photo
M123	Plastic	black	refer to photo
M124	Plastic	black	refer to photo

**Test Report No.: 180259259a 001**

Page 6 of 39

M125	Plastic	black	refer to photo
M126	Plastic	black	refer to photo
M127	Plastic	black	refer to photo
M128	Plastic	black	refer to photo
M129	Plastic	white	refer to photo
M130	Plastic	black	refer to photo
M131	Plastic	black	refer to photo
M132	Plastic	dark blue	refer to photo
M133	Plastic	blue	refer to photo
M134	Plastic	blue	refer to photo
M135	Plastic	blue	refer to photo
M136	Plastic	white	refer to photo
M137	Plastic	white	refer to photo
M138	Plastic	black	refer to photo
M139	Plastic	blue	refer to photo
M140	Plastic	yellow-green	refer to photo
M141	Plastic	black	refer to photo
M142	Plastic	brown	refer to photo
M143	Plastic	pink-red	refer to photo
M144	Metal	silver	refer to photo
M145	Metal	silver	refer to photo
M146	Metal	silver	refer to photo
M147	Metal	silver	refer to photo
M148	Plastic	white	refer to photo
M149	Plastic	black	refer to photo
M150	Plastic	dark red	refer to photo
M151	Metal	silver	refer to photo
M152	Plastic	pink-red	refer to photo
M153	Plastic	black	refer to photo
M154	Plastic	white	refer to photo
M155	Plastic	grey	refer to photo
M156	Plastic	grey+multi	refer to photo

**Test Report No.: 180259259a 001**

Page 7 of 39

M157	Plastic	light yellow	refer to photo
M158	Plastic	white	refer to photo
M159	Metal	silver	refer to photo
M160	Plastic	white	refer to photo
M161	Metal	silver	refer to photo
M162	Metal	silver	refer to photo
M163	Metal	silver	refer to photo
M164	Metal	silver	refer to photo
M165	Metal	silver	refer to photo
M166	Metal	silver	refer to photo
M167	Plastic	black	refer to photo
M168	Foam + adhesive	black	refer to photo
M169	Plastic	grey	refer to photo
M170	Textile	white	refer to photo
M171	Metal	silver	refer to photo
M172	Plastic	white	refer to photo
M173	Plastic	red	refer to photo
M174	Plastic	green	refer to photo
M175	Plastic	black	refer to photo
M176	Plastic	brown	refer to photo
M177	Plastic	blue	refer to photo
M178	Plastic	purple	refer to photo
M179	Plastic	light yellow	refer to photo
M180	Plastic	grey	refer to photo
M181	Plastic	white	refer to photo
M182	Plastic	red	refer to photo
M183	Plastic	yellow	refer to photo
M184	Plastic	white	refer to photo
M185	Plastic	black	refer to photo
M186	Glue	black	refer to photo
M187	Plastic	white	refer to photo
M188	Plastic	red	refer to photo

**Test Report No.: 180259259a 001**

Page 8 of 39

M189	Plastic	black	refer to photo
M190	Plastic	light yellow	refer to photo
M191	Plastic	orange	refer to photo
M192	Plastic	brown	refer to photo
M193	Plastic	green	refer to photo
M194	Plastic	dark blue	refer to photo
M195	Plastic	black	refer to photo
M196	Plastic	cyan-blue	refer to photo
M197	Metal	silver	refer to photo
M198	Plastic	black	refer to photo
M199	Plastic	black	refer to photo
M200	Plastic	white	refer to photo
M201	Plastic	black	refer to photo
M202	Metal	silver	refer to photo
M203	Metal	silver	refer to photo
M204	Plastic	orange	refer to photo
M205	Plastic	white+orange	refer to photo
M206	Plastic	blue	refer to photo
M207	Plastic	white+blue	refer to photo
M208	Plastic	green+white	refer to photo
M209	Plastic	green	refer to photo
M210	Plastic	brown	refer to photo
M211	Plastic	white+brown	refer to photo
M212	Metal	golden	refer to photo
M213	Plastic	black	refer to photo
M214	Plastic	black	refer to photo
M215	Plastic	black	refer to photo
M216	Plastic	white	refer to photo
M217	Plastic	dark red	refer to photo
M218	Plastic	white	refer to photo
M219	Plastic	white	refer to photo
M220	Plastic	red	refer to photo



**Test Report No.: 180259259a 001**

Page 9 of 39

M221	Plastic	black	refer to photo
M222	Plastic	black	refer to photo
M223	Plastic	black	refer to photo
M224	Metal	silver	refer to photo
M225	Metal	silver	refer to photo
M226	PCB board	green	refer to photo
M227	Electronic components	black	refer to photo
M228	Plastic	white	refer to photo
M229	Solder	silver	refer to photo
M230	Plastic	black	refer to photo
M231	Plastic	white	refer to photo
M232	Metal	silver	refer to photo
M233	Metal	golden	refer to photo
M234	Metal	golden	refer to photo
M235	Metal	silver	refer to photo
M236	Plastic	white	refer to photo
M237	Plastic	white	refer to photo
M238	Plastic + adhesive	yellow	refer to photo
M239	Plastic	black	refer to photo
M240	Plastic	black	refer to photo
M241	Plastic	red	refer to photo
M242	Metal	copper	refer to photo
M243	Plastic	black	refer to photo
M244	Metal	silver	refer to photo
M245	Metal	silver	refer to photo
M246	Metal	silver	refer to photo
M247	Metal	silver	refer to photo
M248	Metal	silver	refer to photo
M249	Metal	silver	refer to photo
M250	Metal	silver	refer to photo
M251	Metal	silver	refer to photo
M252	Metal	silver	refer to photo

**Test Report No.: 180259259a 001**

Page 10 of 39

M253	Metal	silver	refer to photo
M254	Metal	silver	refer to photo
M255	Plastic	blue	refer to photo
M256	Plastic	black	refer to photo
M257	Plastic	black	refer to photo
M258	Metal	silver	refer to photo
M259	Metal	silver	refer to photo
M260	Metal	silver	refer to photo
M261	Plastic	white	refer to photo
M262	Plastic	black	refer to photo
M263	Plastic	black	refer to photo
M264	Plastic	black	refer to photo
M265	Metal	silver	refer to photo
M266	Plastic	black	refer to photo
M267	Plastic	dark blue	refer to photo
M268	Plastic	black	refer to photo
M269	Plastic	white	refer to photo
M270	Metal	silver	refer to photo
M271	Metal	silver	refer to photo
M272	Metal	silver	refer to photo
M273	Plastic	black	refer to photo
M274	Plastic	white	refer to photo
M275	Plastic	white	refer to photo
M276	Plastic	black	refer to photo
M277	Plastic	black	refer to photo
M278	Plastic	dark blue	refer to photo
M279	Plastic	grey	refer to photo
M280	Plastic	orange	refer to photo
M281	Metal	silver	refer to photo
M282	Metal	silver	refer to photo
M283	Metal	copper	refer to photo
M284	Plastic	black	refer to photo

**Test Report No.: 180259259a 001**

Page 11 of 39

M285	Plastic	transparent	refer to photo
M286	Plastic	black	refer to photo
M287	Metal	silver	refer to photo
M288	Metal	golden	refer to photo
M289	Plastic	white	refer to photo
M290	Plastic	yellow	refer to photo
M291	Metal	silver	refer to photo
M292	Metal	silver	refer to photo
M293	Metal	silver	refer to photo
M294	Coating	white	refer to photo
M295	Metal	silver	refer to photo
M296	Metal	silver	refer to photo
M297	Magnet	black	refer to photo
M298	Plastic	black	refer to photo
M299	Plastic	black	refer to photo
M300	Plastic	dark pink-red	refer to photo
M301	Plastic	white+black	refer to photo
M302	Plastic	white	refer to photo
M303	Metal	silver	refer to photo
M304	Glue	yellow	refer to photo
M305	Electronic components	black	refer to photo
M306	Solder	silver	refer to photo
M307	Metal	copper	refer to photo
M308	Glue	grey	refer to photo
M309	Metal	silver	refer to photo
M310	Plastic + adhesive	silver	refer to photo
M311	Metal	silver	refer to photo
M312	Plastic + adhesive	white+black	refer to photo
M313	Plastic + adhesive	yellow	refer to photo
M314	Plastic + Textile	white	refer to photo
M315	Plastic	white	refer to photo
M316	Plastic	black	refer to photo

**Test Report No.: 180259259a 001**

Page 12 of 39

M317	Plastic	red	refer to photo
M318	Plastic	black	refer to photo
M319	Plastic	white	refer to photo
M320	Metal	silver	refer to photo
M321	Metal	silver	refer to photo
M322	Solder	silver	refer to photo
M323	Metal	copper	refer to photo
M324	Plastic	white	refer to photo
M325	Metal	silver	refer to photo
M326	Metal	silver	refer to photo
M327	Plastic	transparent	refer to photo
M328	Plastic	yellow	refer to photo
M329	Plastic	black	refer to photo
M330	Plastic	red	refer to photo
M331	Metal	copper	refer to photo
M332	Plastic + Textile	white	refer to photo
M333	Plastic	dark red	refer to photo
M334	Plastic	black	refer to photo
M335	Solder	silver	refer to photo
M336	Metal	copper	refer to photo
M337	Magnet	cyan-blue	refer to photo
M338	Rubber	black	refer to photo

**Test Report No.: 180259259a 001**

Page 13 of 39

**1.Screening Test by XRF spectroscopy**

Test Method: Cadmium, Lead, Mercury, Chromium, Bromine  
 -- With reference to IEC 62321-3-1:2013

**Test Result:**

Material No.	Cd	Cr	Pb	Hg	Br
M001	BL	BL	BL	BL	n.a.
M002	BL	BL	BL	BL	BL
M003	BL	BL	BL	BL	BL
M004	BL	BL	BL	BL	BL
M005	BL	BL	BL	BL	BL
M006	BL	BL	BL	BL	BL
M007	BL	BL	BL	BL	BL
M008	BL	BL	BL	BL	BL
M009	BL	BL	BL	BL	d.(*1)
M010	BL	BL	BL	BL	BL
M011	BL	BL	BL	BL	n.a.
M012	BL	BL	BL	BL	d.(*1)
M013	BL	BL	BL	BL	BL
M014	BL	BL	BL	BL	d.(*1)
M015	BL	BL	BL	BL	BL
M016	BL	BL	BL	BL	d.(*1)
M017	BL	BL	BL	BL	d.(*1)
M018	BL	BL	BL	BL	n.a.
M019	BL	BL	BL	BL	d.(*1)
M020	BL	BL	BL	BL	n.a.
M021	BL	BL	BL	BL	BL
M022	BL	BL	BL	BL	n.a.
M023	BL	BL	BL	BL	BL
M024	BL	BL	BL	BL	d.(*1)
M025	BL	BL	BL	BL	BL
M026	BL	BL	BL	BL	d.(*1)
M027	BL	BL	BL	BL	BL
M028	BL	BL	BL	BL	BL
M029	BL	BL	BL	BL	BL
M030	BL	BL	BL	BL	BL
M031	BL	BL	BL	BL	d.(*1)
M032	BL	BL	BL	BL	n.a.
M033	BL	BL	BL	BL	BL
M034	BL	BL	BL	BL	BL
M035	BL	BL	BL	BL	BL
M036	BL	BL	BL	BL	BL
M037	BL	BL	BL	BL	BL

**Test Report No.: 180259259a 001**

Page 14 of 39

M038	BL	BL	BL	BL	n.a.
M039	BL	BL	BL	BL	d.(*1)
M040	BL	BL	BL	BL	BL
M041	BL	BL	BL	BL	BL
M042	BL	BL	BL	BL	n.a.
M043	BL	BL	BL	BL	n.a.
M044	BL	BL	BL	BL	BL
M045	BL	BL	BL	BL	BL
M046	BL	BL	BL	BL	n.a.
M047	BL	BL	BL	BL	BL
M048	BL	BL	BL	BL	BL
M049	BL	BL	BL	BL	BL
M050	BL	BL	BL	BL	BL
M051	BL	BL	BL	BL	BL
M052	BL	BL	BL	BL	BL
M053	BL	BL	BL	BL	n.a.
M054	BL	BL	BL	BL	d.(*1)
M055	BL	BL	BL	BL	d.(*1)
M056	BL	BL	BL	BL	d.(*1)
M057	BL	BL	BL	BL	d.(*1)
M058	BL	BL	BL	BL	BL
M059	BL	BL	BL	BL	d.(*1)
M060	BL	BL	BL	BL	BL
M061	BL	BL	BL	BL	BL
M062	BL	BL	BL	BL	BL
M063	BL	BL	BL	BL	d.(*1)
M064	BL	BL	BL	BL	BL
M065	BL	BL	BL	BL	BL
M066	BL	BL	BL	BL	d.(*1)
M067	BL	BL	BL	BL	d.(*1)
M068	BL	BL	BL	BL	d.(*1)
M069	BL	BL	BL	BL	BL
M070	BL	BL	BL	BL	d.(*1)
M071	BL	BL	BL	BL	n.a.
M072	BL	BL	BL	BL	n.a.
M073	BL	BL	BL	BL	d.(*1)
M074	BL	BL	BL	BL	BL
M075	BL	BL	BL	BL	BL
M076	BL	d.(*1)	BL	BL	n.a.
M077	BL	d.(*1)	BL	BL	n.a.
M078	BL	BL	BL	BL	BL
M079	BL	BL	BL	BL	n.a.
M080	BL	BL	BL	BL	n.a.

**Test Report No.: 180259259a 001**

Page 15 of 39

M081	BL	BL	BL	BL	n.a.
M082	BL	BL	BL	BL	BL
M083	BL	BL	BL	BL	BL
M084	BL	BL	BL	BL	d.(*1)
M085	BL	BL	BL	BL	BL
M086	BL	BL	BL	BL	d.(*1)
M087	BL	BL	BL	BL	BL
M088	BL	BL	BL	BL	n.a.
M089	BL	BL	BL	BL	BL
M090	BL	BL	BL	BL	BL
M091	BL	BL	BL	BL	n.a.
M092	BL	BL	BL	BL	n.a.
M093	BL	BL	BL	BL	BL
M094	BL	d.(*1)	BL	BL	BL
M095	BL	BL	BL	BL	BL
M096	BL	BL	BL	BL	n.a.
M097	BL	BL	BL	BL	n.a.
M098	BL	BL	BL	BL	BL
M099	BL	BL	BL	BL	BL
M100	BL	BL	BL	BL	d.(*1)
M101	d.(*1)	BL	BL	BL	BL
M102	BL	BL	BL	BL	BL
M103	BL	BL	BL	BL	BL
M104	BL	BL	BL	BL	n.a.
M105	BL	BL	BL	BL	n.a.
M106	BL	BL	BL	BL	BL
M107	BL	d.(*1)	BL	BL	n.a.
M108	BL	BL	BL	BL	BL
M109	BL	d.(*1)	BL	BL	n.a.
M110	BL	BL	BL	BL	BL
M111	BL	BL	BL	BL	BL
M112	BL	BL	BL	BL	BL
M113	BL	BL	BL	BL	n.a.
M114	BL	BL	BL	BL	n.a.
M115	BL	BL	BL	BL	d.(*1)
M116	BL	BL	BL	BL	BL
M117	BL	BL	BL	BL	BL
M118	BL	BL	BL	BL	d.(*1)
M119	BL	BL	BL	BL	d.(*1)
M120	BL	BL	BL	BL	d.(*1)
M121	BL	BL	BL	BL	BL
M122	BL	BL	BL	BL	d.(*1)
M123	BL	BL	BL	BL	BL

**Test Report No.: 180259259a 001**

Page 16 of 39

M124	BL	BL	BL	BL	BL
M125	BL	BL	BL	BL	BL
M126	BL	BL	BL	BL	d.(*1)
M127	BL	BL	BL	BL	BL
M128	BL	BL	BL	BL	BL
M129	BL	BL	BL	BL	BL
M130	BL	BL	BL	BL	BL
M131	BL	BL	BL	BL	BL
M132	BL	BL	BL	BL	BL
M133	BL	BL	BL	BL	BL
M134	BL	BL	BL	BL	BL
M135	BL	BL	BL	BL	BL
M136	BL	BL	BL	BL	BL
M137	BL	BL	BL	BL	BL
M138	BL	BL	BL	BL	d.(*1)
M139	BL	BL	BL	BL	BL
M140	BL	BL	BL	BL	BL
M141	BL	BL	BL	BL	BL
M142	BL	BL	BL	BL	BL
M143	BL	BL	BL	BL	BL
M144	BL	BL	d.(*1)	BL	n.a.
M145	BL	BL	BL	BL	n.a.
M146	BL	BL	BL	BL	n.a.
M147	BL	BL	BL	BL	n.a.
M148	BL	BL	BL	BL	BL
M149	BL	BL	BL	BL	BL
M150	BL	BL	BL	BL	BL
M151	BL	BL	BL	BL	n.a.
M152	BL	BL	BL	BL	BL
M153	BL	BL	BL	BL	BL
M154	BL	BL	BL	BL	BL
M155	BL	BL	BL	BL	BL
M156	BL	BL	BL	BL	BL
M157	BL	BL	BL	BL	BL
M158	BL	BL	BL	BL	d.(*1)
M159	BL	BL	BL	BL	n.a.
M160	BL	BL	BL	BL	BL
M161	BL	d.(*1)	BL	BL	n.a.
M162	BL	BL	BL	BL	n.a.
M163	BL	d.(*1)	BL	BL	n.a.
M164	BL	d.(*1)	BL	BL	n.a.
M165	BL	d.(*1)	BL	BL	n.a.
M166	BL	BL	BL	BL	n.a.



**Test Report No.: 180259259a 001**

Page 17 of 39

M167	BL	BL	BL	BL	BL
M168	BL	BL	BL	BL	BL
M169	BL	BL	BL	BL	BL
M170	BL	BL	BL	BL	BL
M171	BL	d.(*1)	BL	BL	n.a.
M172	BL	BL	BL	BL	BL
M173	BL	BL	BL	BL	BL
M174	BL	BL	BL	BL	BL
M175	BL	BL	BL	BL	BL
M176	BL	BL	BL	BL	BL
M177	BL	BL	BL	BL	BL
M178	BL	BL	BL	BL	BL
M179	BL	BL	BL	BL	BL
M180	BL	BL	BL	BL	BL
M181	BL	BL	BL	BL	BL
M182	BL	BL	BL	BL	BL
M183	BL	BL	BL	BL	BL
M184	BL	BL	BL	BL	BL
M185	BL	BL	BL	BL	BL
M186	BL	BL	BL	BL	BL
M187	BL	BL	BL	BL	BL
M188	BL	BL	BL	BL	BL
M189	BL	BL	BL	BL	BL
M190	BL	BL	BL	BL	BL
M191	BL	BL	BL	BL	BL
M192	BL	BL	BL	BL	BL
M193	BL	BL	BL	BL	BL
M194	BL	BL	BL	BL	BL
M195	BL	BL	BL	BL	BL
M196	BL	BL	BL	BL	BL
M197	BL	d.(*1)	BL	BL	n.a.
M198	BL	BL	BL	BL	BL
M199	BL	BL	BL	BL	BL
M200	BL	BL	BL	BL	BL
M201	BL	BL	BL	BL	BL
M202	BL	BL	BL	BL	n.a.
M203	BL	BL	BL	BL	n.a.
M204	BL	BL	BL	BL	BL
M205	BL	BL	BL	BL	BL
M206	d.(*1)	BL	BL	BL	BL
M207	BL	BL	BL	BL	BL
M208	BL	BL	BL	BL	BL
M209	BL	BL	BL	BL	BL

**Test Report No.: 180259259a 001**

Page 18 of 39

M210	BL	BL	BL	BL	BL
M211	BL	BL	BL	BL	BL
M212	BL	BL	BL	d.(*1)	n.a.
M213	BL	BL	BL	BL	BL
M214	BL	BL	BL	BL	BL
M215	BL	BL	BL	BL	BL
M216	BL	BL	BL	BL	BL
M217	BL	BL	BL	BL	BL
M218	BL	BL	BL	BL	BL
M219	BL	BL	BL	BL	BL
M220	BL	BL	BL	BL	BL
M221	BL	BL	BL	BL	BL
M222	BL	BL	BL	BL	BL
M223	BL	BL	BL	BL	BL
M224	BL	BL	BL	BL	n.a.
M225	BL	BL	BL	BL	n.a.
M226	BL	BL	BL	BL	d.(*1)
M227	BL	BL	BL	BL	BL
M228	BL	BL	BL	BL	BL
M229	BL	BL	d.(*1)	BL	n.a.
M230	BL	BL	BL	BL	d.(*1)
M231	BL	BL	BL	BL	BL
M232	BL	d.(*1)	BL	BL	n.a.
M233	BL	d.(*1)	BL	BL	n.a.
M234	BL	BL	d.(*1)	BL	n.a.
M235	BL	d.(*1)	BL	BL	n.a.
M236	BL	BL	BL	BL	d.(*1)
M237	BL	BL	BL	BL	d.(*1)
M238	BL	BL	BL	BL	BL
M239	BL	BL	BL	BL	d.(*1)
M240	BL	BL	BL	BL	BL
M241	BL	BL	BL	BL	BL
M242	BL	BL	BL	BL	n.a.
M243	BL	BL	BL	BL	BL
M244	BL	d.(*1)	BL	BL	n.a.
M245	BL	BL	BL	BL	n.a.
M246	BL	d.(*1)	BL	BL	n.a.
M247	BL	d.(*1)	BL	BL	n.a.
M248	BL	d.(*1)	BL	BL	n.a.
M249	BL	BL	d.(*1)	BL	n.a.
M250	BL	d.(*1)	BL	BL	n.a.
M251	BL	d.(*1)	BL	BL	n.a.
M252	BL	d.(*1)	BL	BL	n.a.

**Test Report No.: 180259259a 001**

Page 19 of 39

M253	BL	d.(*1)	BL	BL	n.a.
M254	BL	d.(*1)	BL	BL	n.a.
M255	BL	BL	BL	BL	BL
M256	BL	BL	BL	BL	BL
M257	BL	BL	BL	BL	d.(*1)
M258	BL	d.(*1)	BL	BL	n.a.
M259	BL	d.(*1)	BL	BL	n.a.
M260	BL	BL	d.(*1)	BL	n.a.
M261	BL	BL	BL	BL	BL
M262	BL	BL	BL	BL	d.(*1)
M263	BL	BL	BL	BL	BL
M264	BL	BL	BL	BL	BL
M265	BL	d.(*1)	d.(*1)	BL	n.a.
M266	BL	BL	BL	BL	BL
M267	BL	BL	BL	BL	BL
M268	BL	BL	BL	BL	d.(*1)
M269	BL	BL	BL	BL	BL
M270	BL	d.(*1)	BL	BL	n.a.
M271	BL	BL	d.(*1)	BL	n.a.
M272	d.(*1)	BL	d.(*1)	BL	n.a.
M273	BL	BL	BL	BL	d.(*1)
M274	BL	BL	BL	BL	BL
M275	BL	BL	BL	BL	BL
M276	BL	BL	BL	BL	d.(*1)
M277	BL	BL	BL	BL	d.(*1)
M278	BL	BL	BL	BL	BL
M279	BL	BL	BL	BL	BL
M280	BL	BL	BL	BL	BL
M281	d.(*1)	BL	d.(*1)	BL	n.a.
M282	BL	d.(*1)	BL	BL	n.a.
M283	BL	BL	BL	BL	n.a.
M284	BL	BL	BL	BL	d.(*1)
M285	BL	BL	BL	BL	BL
M286	BL	BL	BL	BL	BL
M287	BL	BL	BL	BL	BL
M288	BL	BL	BL	BL	BL
M289	BL	BL	BL	BL	BL
M290	BL	BL	BL	BL	BL
M291	BL	d.(*1)	BL	BL	n.a.
M292	BL	d.(*1)	BL	BL	n.a.
M293	BL	BL	BL	BL	n.a.
M294	BL	BL	BL	BL	BL
M295	BL	d.(*1)	BL	BL	n.a.

**Test Report No.: 180259259a 001**

Page 20 of 39

M296	BL	BL	BL	BL	n.a.
M297	BL	d.(*1)	BL	BL	n.a.
M298	BL	BL	BL	BL	BL
M299	BL	BL	BL	BL	BL
M300	BL	BL	BL	BL	BL
M301	BL	BL	BL	BL	BL
M302	BL	BL	BL	BL	BL
M303	BL	d.(*1)	BL	BL	n.a.
M304	BL	BL	BL	BL	BL
M305	BL	BL	BL	BL	BL
M306	BL	BL	BL	BL	n.a.
M307	BL	BL	BL	BL	n.a.
M308	BL	BL	BL	BL	BL
M310	BL	BL	BL	BL	BL
M311	BL	BL	BL	BL	n.a.
M312	BL	BL	BL	BL	BL
M313	BL	BL	BL	BL	BL
M314	BL	BL	BL	BL	BL
M315	BL	BL	BL	BL	BL
M316	BL	BL	BL	BL	BL
M317	BL	BL	BL	BL	BL
M318	BL	BL	BL	BL	BL
M319	BL	BL	BL	BL	BL
M320	BL	BL	BL	BL	n.a.
M321	BL	BL	BL	BL	n.a.
M322	BL	BL	BL	BL	n.a.
M323	BL	BL	BL	BL	n.a.
M324	BL	BL	BL	BL	BL
M325	BL	d.(*1)	BL	BL	n.a.
M326	BL	BL	BL	BL	n.a.
M327	BL	BL	BL	BL	BL
M328	BL	BL	BL	BL	BL
M329	BL	BL	BL	BL	BL
M330	BL	BL	BL	BL	BL
M331	BL	BL	BL	BL	n.a.
M332	BL	BL	BL	BL	BL
M333	BL	BL	BL	BL	BL
M334	BL	BL	BL	BL	BL
M335	d.(*1)	BL	d.(*1)	BL	n.a.
M336	BL	BL	BL	BL	n.a.
M337	BL	BL	BL	BL	n.a.
M338	BL	BL	BL	BL	BL
M309	BL	BL	BL	BL	n.a.

**Test Report No.: 180259259a 001**

Page 21 of 39

<b>Abbreviation:</b>	Pb	=	Lead
	Cd	=	Cadmium
	Hg	=	Mercury
	Cr	=	Chromium
	Br	=	Bromine
	n.a.	=	Not applicable
	BL	=	Below limit
	OL	=	Over limit
	d.	=	Detected

**Remark:**

- (\*1) The screening result was detected in the inconclusive region or over limits, thus the further wet chemistry tests are suggested.
- (\*2) Component(s)/ materials(s) with an area of less than 2 mm x 2 mm will not be selected for testing according to RoHS Directive 2011/65/EU due to technical reason.  
 For the test sample does not have detail materials information provided by client, visually identical materials (e.g. wire insulation, solder points, etc.) will be considered as the same material.  
 Solder points on a printing circuit board will be examined several times based on optical anomalies or discoloration of the solder point(s) unless the solder point(s) is obviously generated automatically during production.  
 All other materials will be sampled and tested at one test point representatively.
- (\*3) The Chromium (Cr) and Bromine (Br) in the above result table indicate the total chromium and total bromine by means of XRF screening. PBBs, or PBDEs content shall be further confirmed with reference to IEC 62321-6:2015. Chromium (VI) shall be further confirmed with reference to IEC 62321-7-1:2015, IEC 62321-7-2:2017 or EN ISO 17075-1:2017.

XRF Screening limits for different matrices :

Material	Concentration (%)				
	Cd	Cr	Pb	Hg	Br
<b>Polymeric</b>	BL≤0.006<X<0.014≤ OL	BL≤0.064<X	BL≤0.067<X<0.133≤ OL	BL≤0.066<X< 0.134≤OL	BL≤0.029<X
<b>Metallic</b>	BL≤0.006<X<0.014≤ OL	BL≤0.064<X	BL≤0.067<X<0.133≤ OL	BL≤0.066<X< 0.134≤OL	n.a.
<b>Composite materials</b>	BL≤0.004<X<0.016≤ OL	BL≤0.044<X	BL≤0.047<X<0.153≤ OL	BL≤0.046<X< 0.154≤OL	BL≤0.024<X

Remark: The symbol "X" marks the region where further investigation is necessary.

	Cd	Cr(VI)	Pb	Hg	PBBs	PBDEs
<b>Maximum permissible Limit (%)</b>	0.01	0.1	0.1	0.1	0.1	0.1

**Test Report No.: 180259259a 001**

Page 22 of 39

**2.Cadmium, Lead, Chromium (VI), Mercury, Polybrominated biphenyls (PBB) and Polybrominated diphenyl ethers (PBDE)**

Test Method: Total Cadmium, Lead, Mercury, Chromium- Ref. to IEC 62321-4:2013+AMD1:2017 and IEC 62321-5:2013

Chromium (VI)

- For Metal material - Ref. to IEC 62321-7-1:2015

- For Plastic or Electronic material – Ref. to IEC 62321-7-2:2017

- For Leather material - # Ref. to EN ISO 17075-1:2017

PBBs, PBDEs – Ref. to IEC 62321-6:2015

**Test Result:**

	<b>Cd</b>	<b>Cr(VI)</b>	<b>Pb</b>	<b>Hg</b>	<b>PBBs</b>	<b>PBDEs</b>
<b>Maximum Permissible Limit (%)</b>	0.01	0.1	0.1	0.1	0.1	0.1

<b>Material No.</b>	<b>(%)</b>					
	<b>Cd</b>	<b>Cr<sup>VI</sup></b>	<b>Pb</b>	<b>Hg</b>	<b>PBBs</b>	<b>PBDEs</b>
	<b>RL (%)</b>					
	<b>0.001</b>	<b>0.001</b>	<b>0.001</b>	<b>0.001</b>	<b>0.01</b>	<b>0.01</b>
M009	n.a.	n.a.	n.a.	n.a.	< RL	< RL
M012	n.a.	n.a.	n.a.	n.a.	< RL	< RL
M014	n.a.	n.a.	n.a.	n.a.	< RL	< RL
M016	n.a.	n.a.	n.a.	n.a.	< RL	< RL
M017	n.a.	n.a.	n.a.	n.a.	< RL	< RL
M019	n.a.	n.a.	n.a.	n.a.	< RL	< RL
M024	n.a.	n.a.	n.a.	n.a.	< RL	< RL
M026	n.a.	n.a.	n.a.	n.a.	< RL	< RL
M031	n.a.	n.a.	n.a.	n.a.	< RL	< RL
M039	n.a.	n.a.	n.a.	n.a.	< RL	< RL
M054	n.a.	n.a.	n.a.	n.a.	< RL	< RL
M055	n.a.	n.a.	n.a.	n.a.	< RL	< RL
M056	n.a.	n.a.	n.a.	n.a.	< RL	< RL
M057	n.a.	n.a.	n.a.	n.a.	< RL	< RL
M059	n.a.	n.a.	n.a.	n.a.	< RL	< RL
M063	n.a.	n.a.	n.a.	n.a.	< RL	< RL
M066	n.a.	n.a.	n.a.	n.a.	< RL	< RL
M067	n.a.	n.a.	n.a.	n.a.	< RL	< RL
M068	n.a.	n.a.	n.a.	n.a.	< RL	< RL
M070	n.a.	n.a.	n.a.	n.a.	< RL	< RL

**Test Report No.: 180259259a 001**

Page 23 of 39

M073	n.a.	n.a.	n.a.	n.a.	< RL	< RL
M084	n.a.	n.a.	n.a.	n.a.	< RL	< RL
M086	n.a.	n.a.	n.a.	n.a.	< RL	< RL
M100	n.a.	n.a.	n.a.	n.a.	< RL	< RL
M101	< RL	n.a.	n.a.	n.a.	n.a.	n.a.
M115	n.a.	n.a.	n.a.	n.a.	< RL	< RL
M118	n.a.	n.a.	n.a.	n.a.	< RL	< RL
M119	n.a.	n.a.	n.a.	n.a.	< RL	< RL
M120	n.a.	n.a.	n.a.	n.a.	< RL	< RL
M122	n.a.	n.a.	n.a.	n.a.	< RL	< RL
M126	n.a.	n.a.	n.a.	n.a.	< RL	< RL
M138	n.a.	n.a.	n.a.	n.a.	< RL	< RL
M144	n.a.	n.a.	0.005	n.a.	n.a.	n.a.
M158	n.a.	n.a.	n.a.	n.a.	< RL	< RL
M206	< RL	n.a.	n.a.	n.a.	n.a.	n.a.
M212	n.a.	n.a.	n.a.	< RL	n.a.	n.a.
M226	n.a.	n.a.	n.a.	n.a.	< RL	< RL
M229	n.a.	n.a.	0.006	n.a.	n.a.	n.a.
M230	n.a.	n.a.	n.a.	n.a.	< RL	< RL
M234	n.a.	n.a.	3.34 (*2)	n.a.	n.a.	n.a.
M236	n.a.	n.a.	n.a.	n.a.	< RL	< RL
M237	n.a.	n.a.	n.a.	n.a.	< RL	< RL
M239	n.a.	n.a.	n.a.	n.a.	< RL	< RL
M249	n.a.	n.a.	2.60 (*2)	n.a.	n.a.	n.a.
M257	n.a.	n.a.	n.a.	n.a.	< RL	< RL
M260	n.a.	n.a.	2.91 (*2)	n.a.	n.a.	n.a.
M262	n.a.	n.a.	n.a.	n.a.	< RL	< RL
M265	n.a.	n.a.	2.48 (*2)	n.a.	n.a.	n.a.
M268	n.a.	n.a.	n.a.	n.a.	< RL	< RL
M271	n.a.	n.a.	2.89 (*2)	n.a.	n.a.	n.a.
M272	< RL	n.a.	0.001	n.a.	n.a.	n.a.
M273	n.a.	n.a.	n.a.	n.a.	< RL	< RL
M276	n.a.	n.a.	n.a.	n.a.	< RL	< RL
M277	n.a.	n.a.	n.a.	n.a.	< RL	< RL
M281	< RL	n.a.	0.001	n.a.	n.a.	n.a.
M284	n.a.	n.a.	n.a.	n.a.	< RL	< RL

**Test Report No.: 180259259a 001**

Page 24 of 39

M335	< RL	n.a.	0.003	n.a.	n.a.	n.a.
------	------	------	-------	------	------	------

Material No.	Chromium VI content for metal materials (µg/cm²) (*1) RL: 0.10 µg/cm²
M265	Negative
M076	Negative
M077	Negative
M107	Negative
M109	Negative
M161	Negative
M163	Negative
M164	Negative
M165	Negative
M171	Negative
M197	Negative
M232	Negative
M233	Negative
M235	Negative
M244	Negative
M246	Negative
M247	Negative
M248	Negative
M250	Negative
M251	Negative
M252	Negative
M253	Negative
M254	Negative
M258	Negative
M259	Negative
M270	Negative
M282	Negative
M291	Negative
M292	Negative
M295	Negative
M297	Negative
M303	Negative
M325	Negative

Material No.	Chromium VI content for other materials (%) RL: 0.01%
M094	< RL



**Test Report No.: 180259259a 001**

Page 25 of 39

<b>Abbreviation:</b>	Pb	= Lead
	Cd	= Cadmium
	Hg	= Mercury
	Cr	= Chromium
	Cr (VI)	= Chromium (VI)
	PBBs	= Total Polybrominated Biphenyls
	PBDEs	= Total Polybrominated Diphenyl Ethers
	<	= Less than
	RL	= Reporting Limit
	n.a.	= Not Applicable
	^	= The total Chromium have been determined
	%	= Percentage

**Remark:**

- (\*1) The Chromium (VI) content of metal sample in surface layer have been confirmed with reference to IEC 62321-7-1:2015 Annex.

	Chromium (VI) concentration	Qualitative result
Negative	$<0.1\mu\text{g}/\text{cm}^2$	The sample is negative (-ve) for Cr(VI). The Cr(VI) concentration is below the limit of quantification. The coating is considered a non-Cr(VI) based coating
Inconclusive	$\geq 0.1\mu\text{g}/\text{cm}^2$ and $\leq 0.13\mu\text{g}/\text{cm}^2$	The result is considered to be inconclusive. Unavoidable coating variations may influence the determination. Recommendation: if additional samples are available, perform a total of 3 trials to increase sampling surface area. Use the averaged result of the 3 trials for the final determination.
Positive	$>0.13\mu\text{g}/\text{cm}^2$	The sample is positive (+ve) for Cr(VI). Concentration is above the limit of quantification and the statistical margin of error. The sample coating is considered to contain Cr(VI).

- (\*2) According to Annex III of directive 2011/65/EU, Lead as an alloying element in copper alloy containing up to 4 % lead by weight.

**Test Report No.: 180259259a 001**

Page 26 of 39

**3. BBP, DBP, DEHP, DIBP content**

Test Method: IEC 62321-8:2017

**Test Result:**

	BBP	DBP	DEHP	DIBP
Maximum permissible Limit (%)	0.1	0.1	0.1	0.1

Test No.	Material No.	RL (%)			
		BBP	DBP	DEHP	DIBP
		RL (%)			
		0.005	0.005	0.005	0.005
T001	M030 + M044 + M045	< RL	< RL	< RL	< RL
T002	M002 + M106 + M294	< RL	< RL	< RL	< RL
T003	M019 + M039 + M054 + M063 + M067	< RL	< RL	< RL	< RL
T004	M005 + M006 + M015 + M052 + M061	< RL	< RL	< RL	< RL
T005	M062 + M082 + M238	< RL	< RL	< RL	< RL
T006	M010 + M108 + M168	< RL	< RL	< RL	< RL
T007	M003 + M004 + M074 + M085 + M186	< RL	< RL	< RL	< RL
T008	M041 + M304	< RL	< RL	< RL	< RL
T009	M007 + M008 + M013 + M014 + M016	< RL	< RL	< RL	< RL
T010	M017 + M021 + M026 + M031 + M050	< RL	< RL	< RL	< RL
T011	M051 + M055 + M056 + M059 + M066	< RL	< RL	< RL	< RL
T012	M068 + M070 + M073 + M075 + M078	< RL	< RL	< RL	< RL
T013	M086 + M087 + M089 + M090 + M099	< RL	< RL	< RL	< RL
T014	M102 + M115 + M118 + M119 + M120	< RL	< RL	< RL	< RL
T015	M122 + M123 + M124 + M125 + M126	< RL	< RL	< RL	< RL
T016	M131 + M132 + M138 + M154 + M155	< RL	< RL	< RL	< RL

**Test Report No.: 180259259a 001**

Page 27 of 39

T017	M156 + M157 + M158 + M160 + M169	< RL	< RL	< RL	< RL
T018	M172 + M181 + M195 + M196 + M213	< RL	< RL	< RL	< RL
T019	M219 + M230 + M231 + M236 + M237	< RL	< RL	< RL	< RL
T020	M239 + M255 + M257 + M262 + M267	< RL	< RL	< RL	< RL
T021	M268 + M273 + M276 + M277 + M278	< RL	< RL	< RL	< RL
T022	M279 + M280 + M284 + M285	< RL	< RL	< RL	< RL
T023	M289 + M301 + M302	< RL	< RL	< RL	< RL
T024	M009 + M047 + M048 + M049 + M101	< RL	< RL	< RL	< RL
T025	M103 + M110 + M111 + M112 + M116	< RL	< RL	< RL	< RL
T026	M117 + M121 + M127 + M128 + M129	< RL	< RL	< RL	< RL
T027	M130 + M133 + M134 + M135 + M136	< RL	< RL	< RL	< RL
T028	M137 + M139 + M140 + M141 + M142	< RL	< RL	< RL	< RL
T029	M143 + M148 + M149 + M150 + M152	< RL	< RL	< RL	< RL
T030	M153 + M167 + M173 + M174 + M175	< RL	< RL	< RL	< RL
T031	M176 + M177 + M178 + M179 + M180	< RL	< RL	< RL	< RL
T032	M182 + M183 + M184 + M185 + M187	< RL	< RL	< RL	< RL
T033	M188 + M189 + M190 + M191 + M192	< RL	< RL	< RL	< RL
T034	M193 + M194 + M198 + M199 + M200	< RL	< RL	< RL	< RL
T035	M201 + M204 + M205 + M206 + M207	< RL	< RL	< RL	< RL
T036	M208 + M209 + M210 + M211 + M214	< RL	< RL	< RL	< RL

**Test Report No.: 180259259a 001**

Page 28 of 39

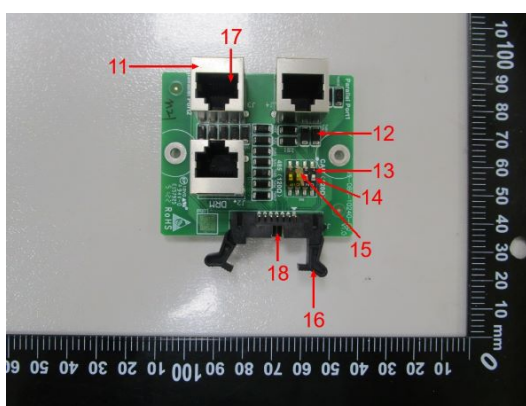
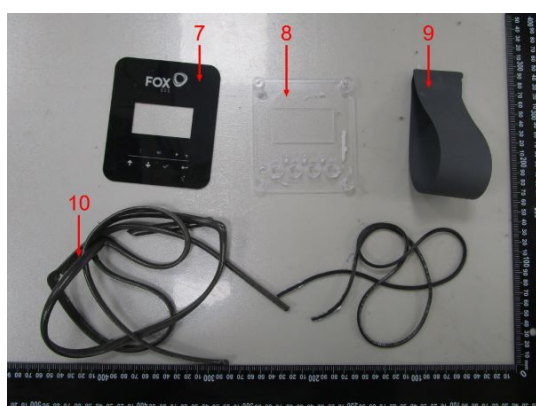
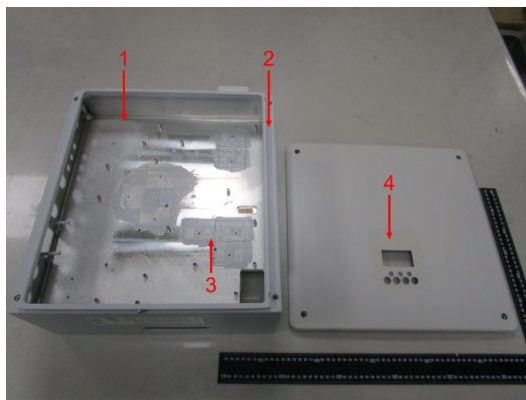
T037	M215 + M216 + M217 + M218 + M220	< RL	< RL	< RL	< RL
T038	M221 + M222 + M223 + M228 + M240	< RL	< RL	< RL	< RL
T039	M241 + M243 + M256 + M261 + M263	< RL	< RL	< RL	< RL
T040	M264 + M266 + M269 + M274 + M275	< RL	< RL	< RL	< RL
T041	M286 + M290 + M298 + M299 + M300	< RL	< RL	< RL	< RL
T042	M100 + M226 + M170	< RL	< RL	< RL	< RL
T043	M308	< RL	< RL	< RL	< RL
T044	M310 + M312 + M313	< RL	< RL	< RL	< RL
T045	M314 + M316 + M317 + M318 + M319	< RL	< RL	< RL	< RL
T046	M315 + M324 + M327	< RL	< RL	< RL	< RL
T047	M328 + M329 + M330	< RL	< RL	< RL	< RL
T048	M332 + M333 + M334	< RL	< RL	< RL	< RL
T049	M338	< RL	< RL	< RL	< RL

**Abbreviation:** BBP= Benzylbutyl phthalate  
 DBP= Dibutyl phthalate  
 DEHP= Bis(2-ethylhexyl) phthalate  
 DIBP= Diisobutyl phthalate  
 < = less than  
 RL = Reporting Limit  
 %= percentage

**Remark:**

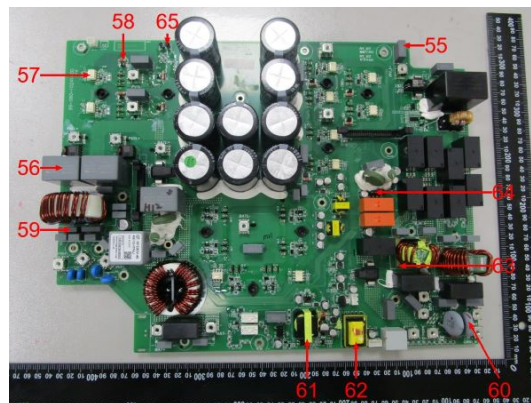
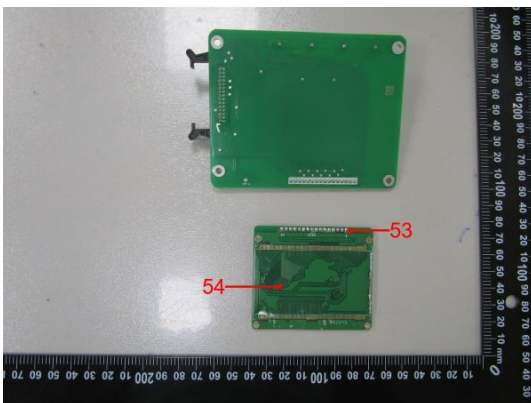
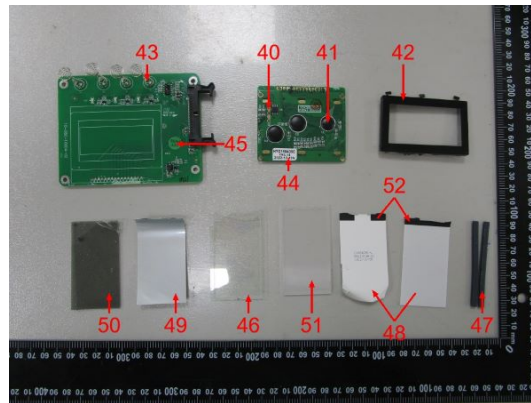
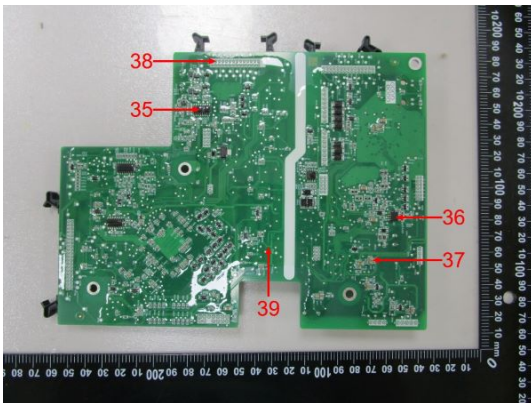
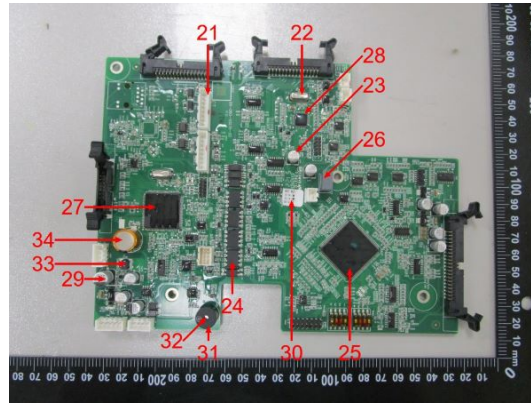
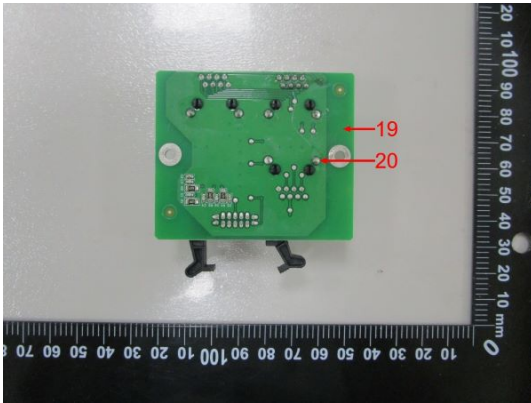
- \* The maximum permissible limit is required from the amendment (EU) 2015/863 of RoHS Directive 2011/65/EU.

Sample Photos





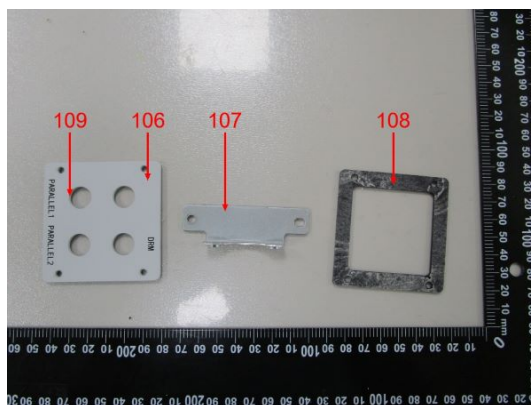
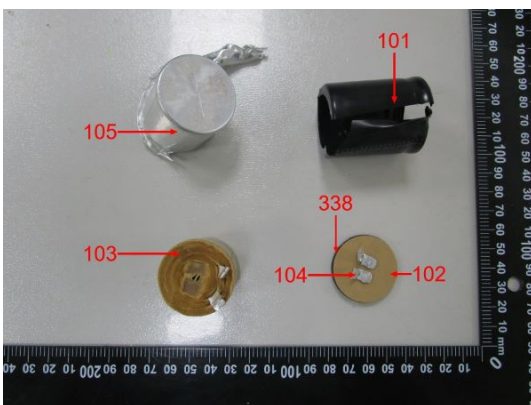
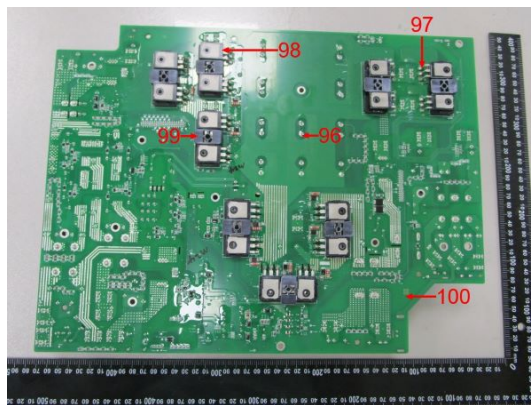
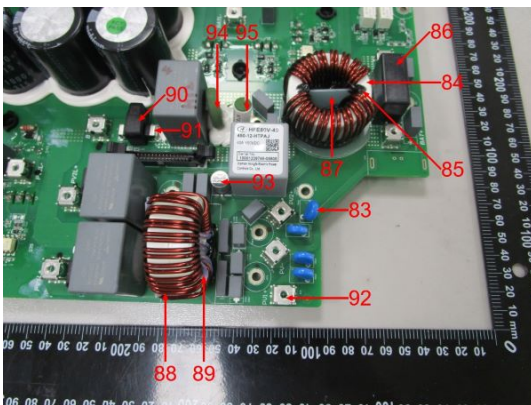
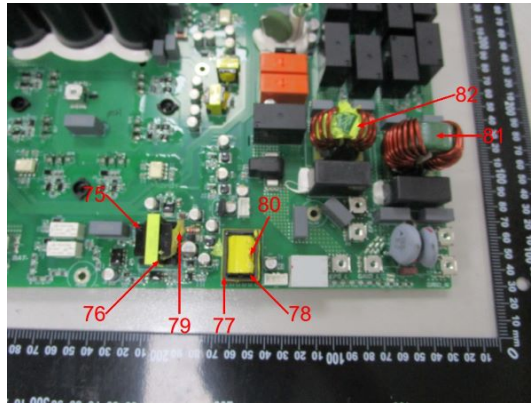
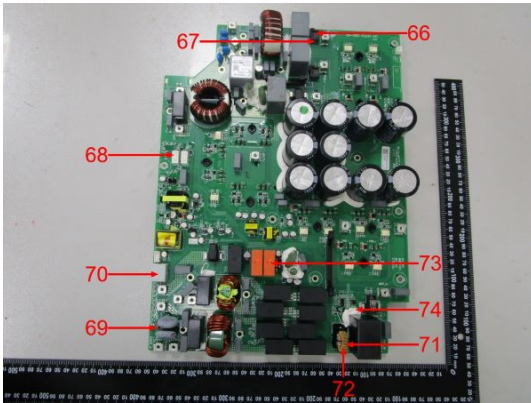
## Sample Photos



**Test Report No.: 180259259a 001**

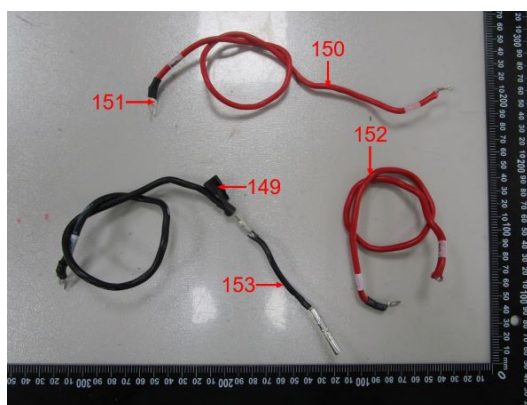
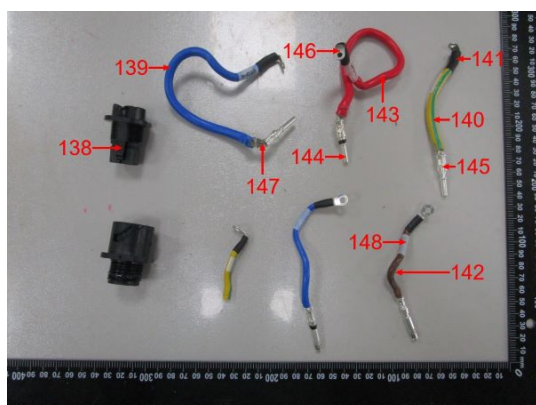
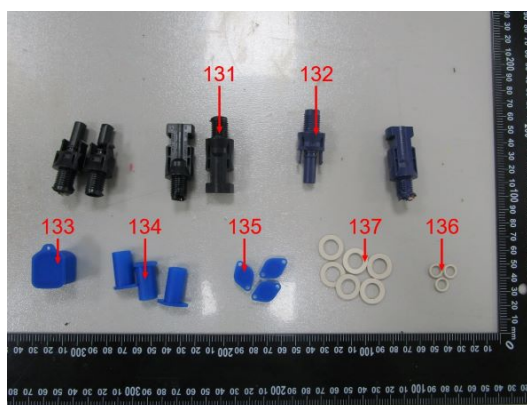
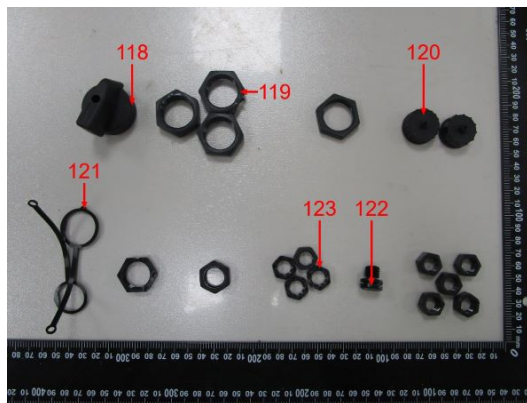
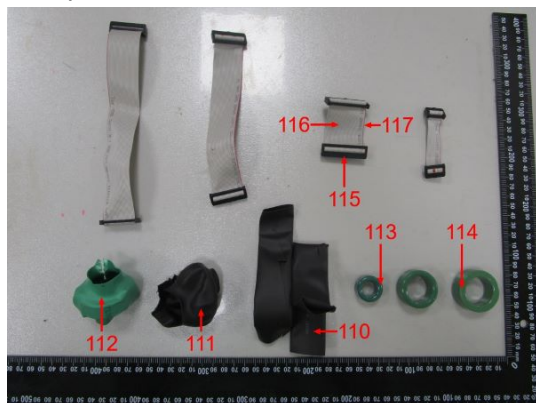
Page 31 of 39

Sample Photos



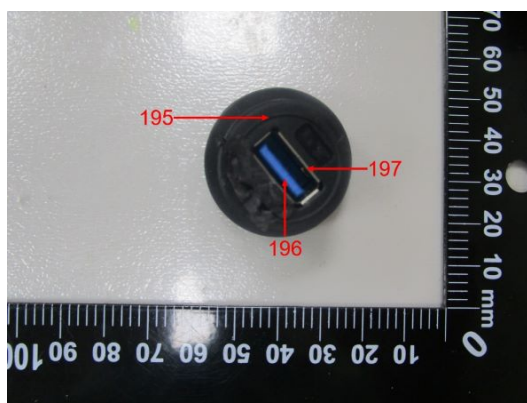
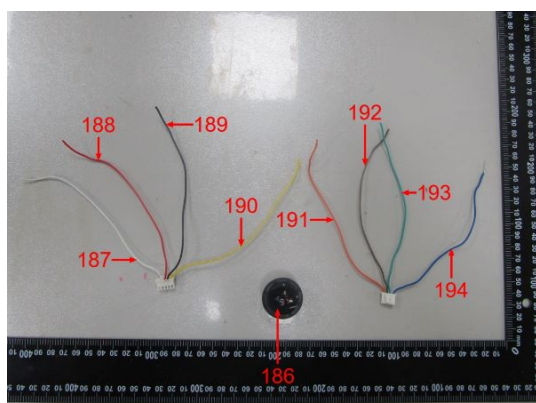
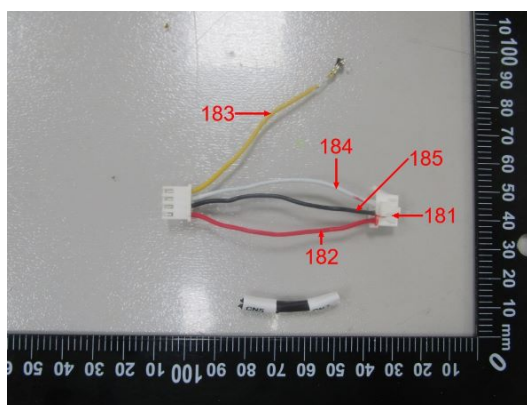
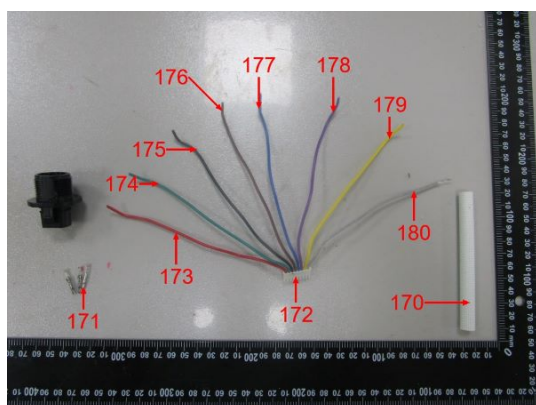
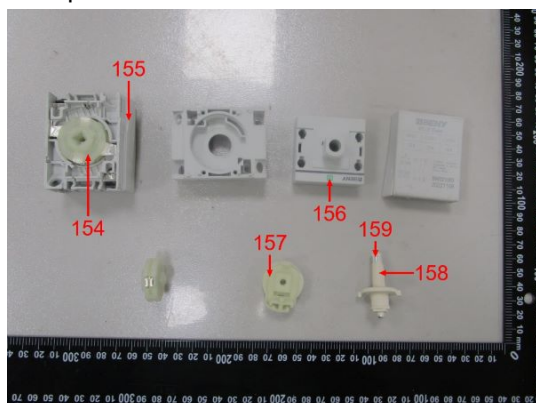


## Sample Photos

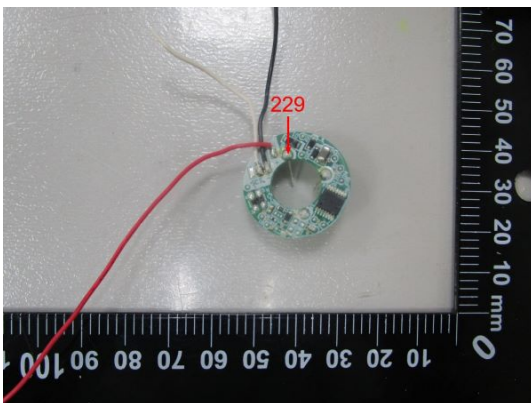
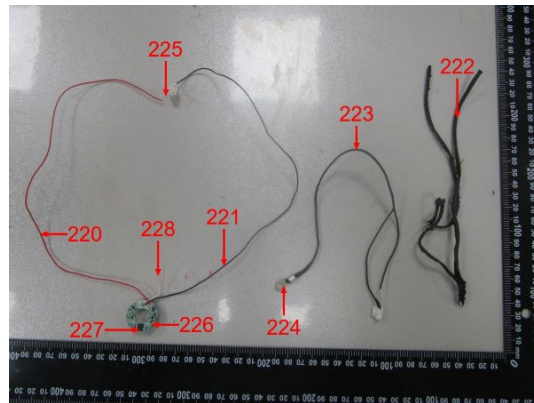
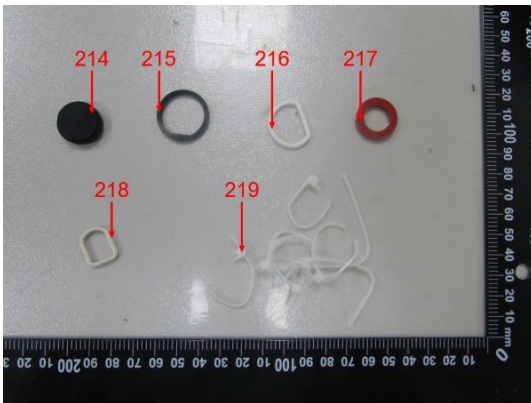
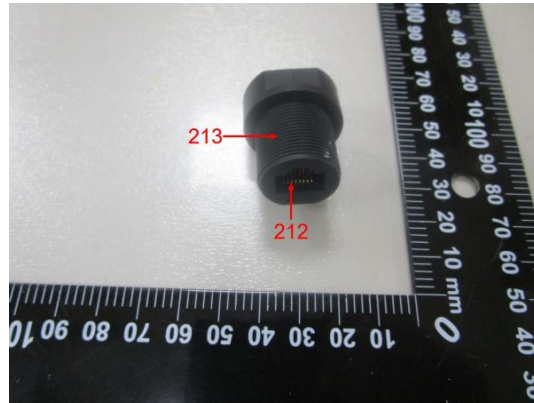
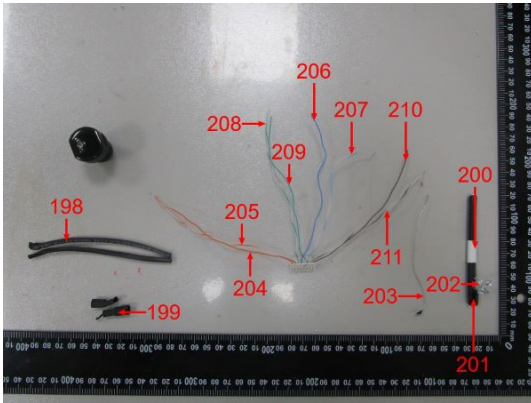




Sample Photos

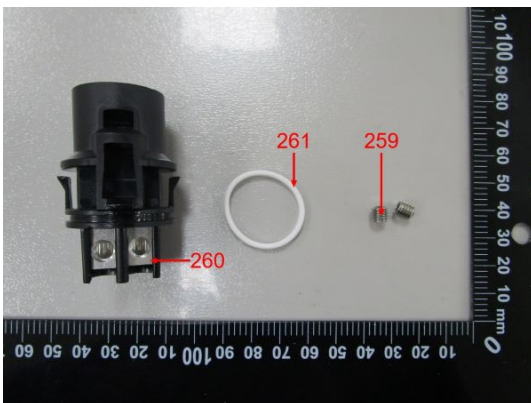
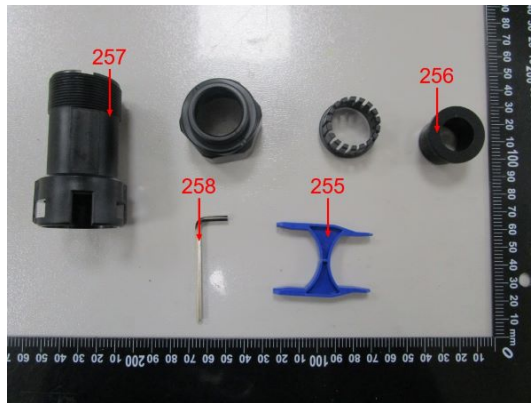
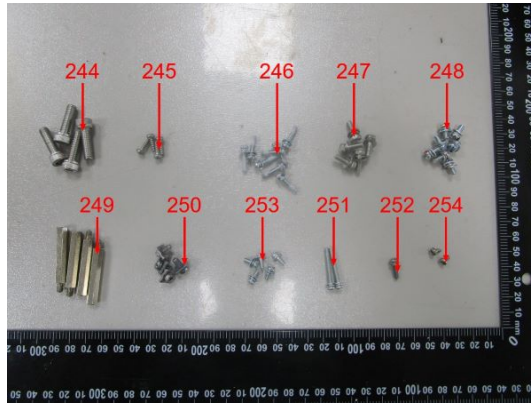
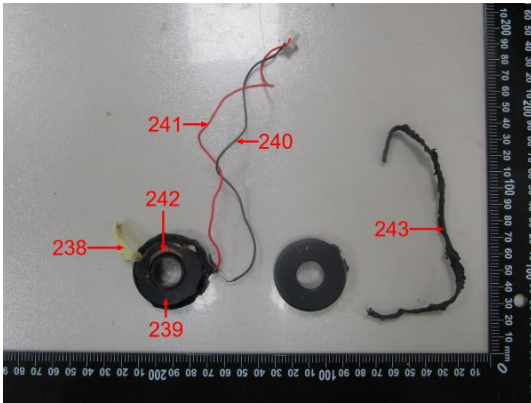


## Sample Photos





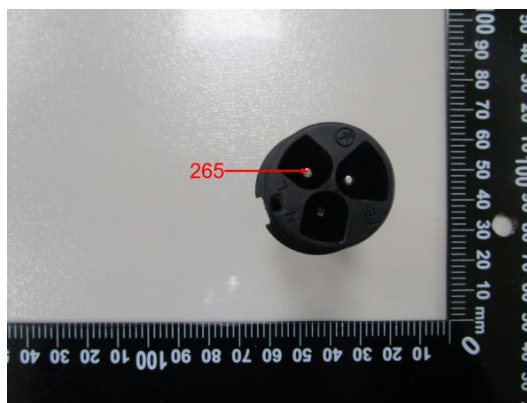
## Sample Photos



**Test Report No.: 180259259a 001**

Page 36 of 39

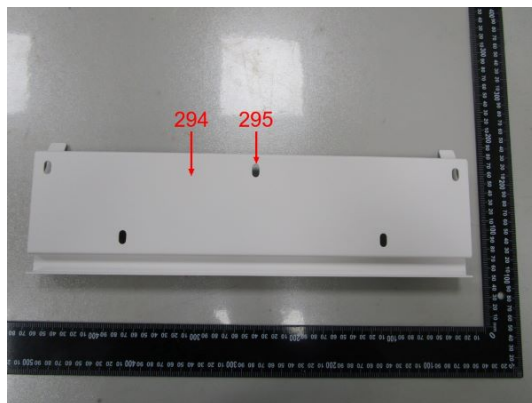
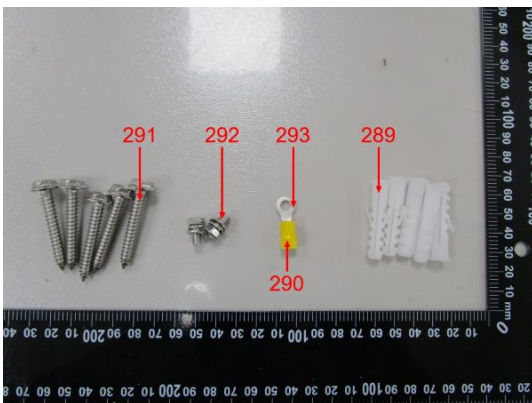
Sample Photos



**Test Report No.: 180259259a 001**

Page 37 of 39

Sample Photos

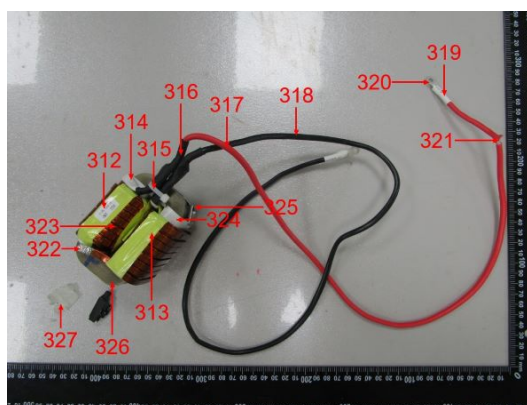
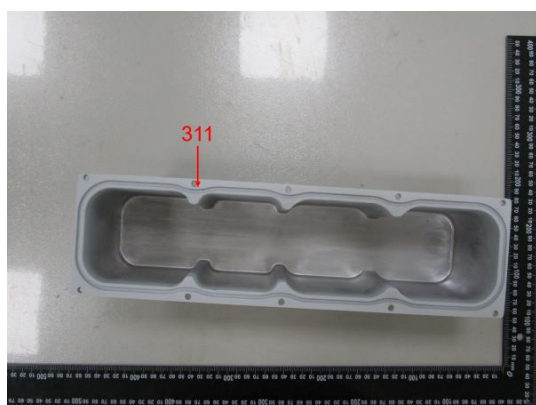
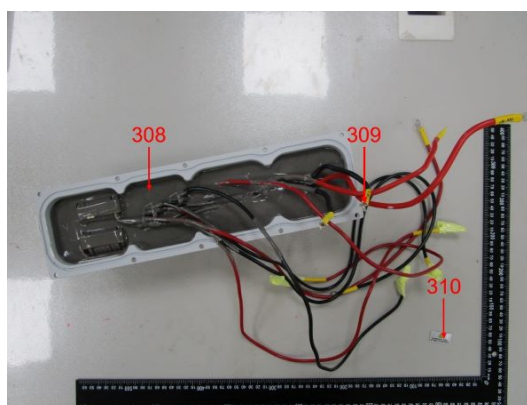
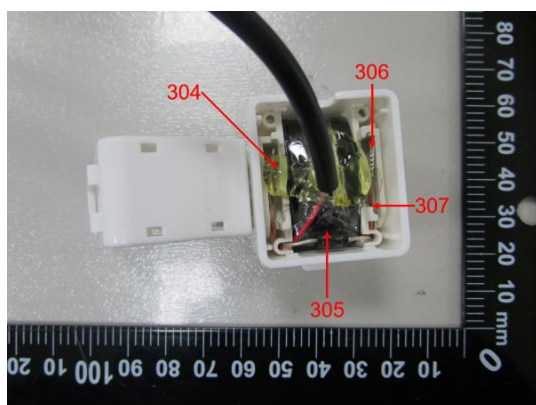
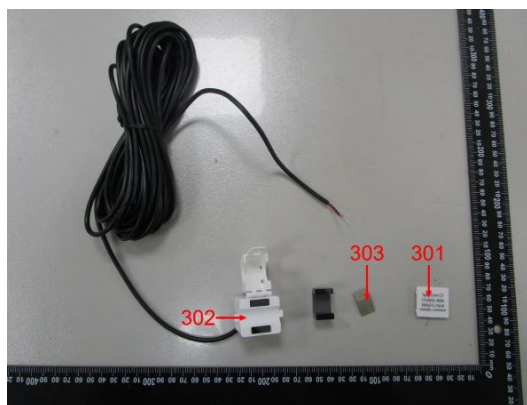
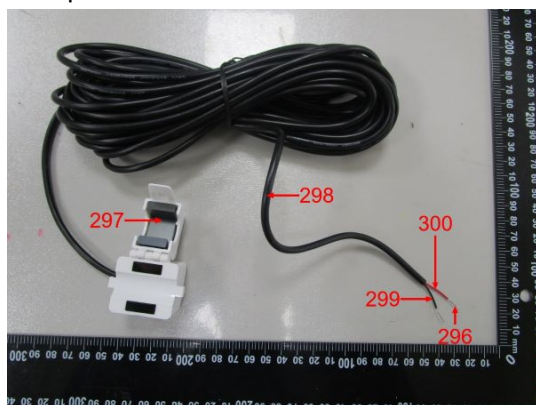




**Test Report No.: 180259259a 001**

Page 38 of 39

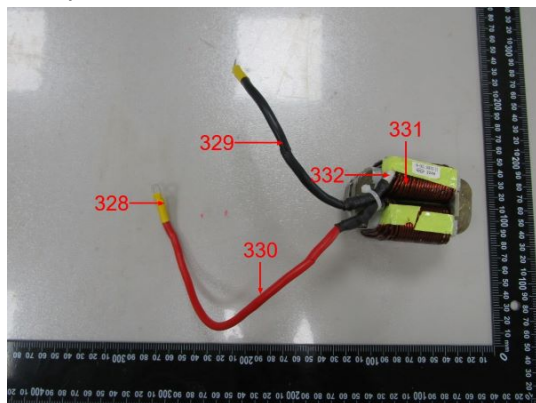
Sample Photos



**Test Report No.: 180259259a 001**

Page 39 of 39

Sample Photos



- END -

