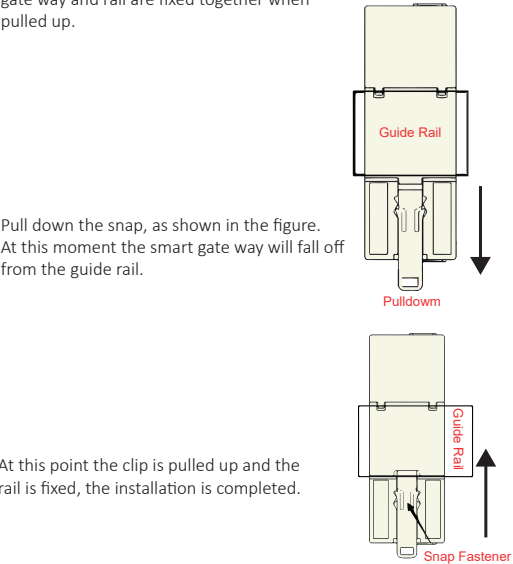


1 Smart Gate Way

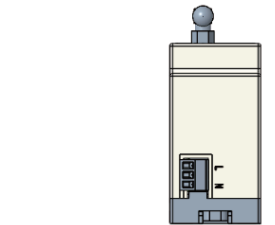
Guideline of smart gate way installation.

Step 1: Smart GW
As shown in the figure below, the snap can be pulled up and down. The rail is loosened when pulled down, and the smart gate way and rail are fixed together when pulled up.

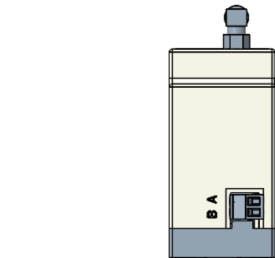


At this point the clip is pulled up and the rail is fixed, the installation is completed.

Step 2:Wiring
Please switch off AC breaker before wiring!
Smart gate way needs AC power supply. It can work well with AC voltage range from 160Vac to 277Vac, 50Hz.
Please connect phase wire to L pin and connect Neutral wire to N pin. The pin in the middle is useless.



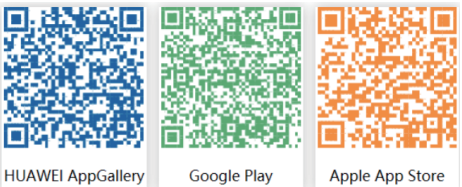
The following figure shows the 485A and 485B terminals.
Please use shielded twisted pair cable for communication conenction.



Step 3:
After finish the wiring of whole system, then power on the smart gate way and the corresponding inverter (In

2 APP Installation

Scan the QR Code below to download and install the FoxCloud APP on your smartphone.



3 Configuration

Note: After power on of the smart gate way, please waiting for one minute before start configuration, so that the system is really ready before configuration.

APP Bluetooth Configuration

Step 1:
Click the "Local distribution network" button in the upper right corner of the login page, click "Local Distribution Network" to go to the Local Matching page.

Sign In

Username(4-20 characters)

Password(6-20 characters)

☐Remember Me

Sign In

Sign In

Username(4-20 characters)

Password(6-20 characters)

☐Remember Me

Sign In

Local distribution network

Selftest(IT Only)

Cancel

Step 2:
Scan or type in the Series Number of smart gate way and click OK to enter the wifi stet up page.

Local distribution network

SN

OK

Set up WIFI

SN:609W6DHF332A011

SSID:

Xiaomi_8BA1

Password:

12345678

OK

Turn on the Bluetooth of the mobile phoneand WIFI function

Bluetooth pairing successful, search fornearby SSID completed

Finished configuring SSID

Cloud connection successful

Step 3:
Select an appropriate SSID and enter the password, click OK. Wait for the connecon to the cloud. Prompting "Success" means the network is connected successfully.

Set up WIFI

SN:609W6DHF332A011

SSID:

Xiaomi_8BA1

Password:

12345678

OK

Waiting for the device connect to the cloud

It will take 09 seconds

Finished configuring SSID

Cloud connection successful

About

Step 1:
Click the "About" button in the upper right corner of the Configure WiFi page and select the "About" option to bring up the pop-up box. You can view the current software version, hardware version and product series

Set up WIFI

SN:609W6DHF332A011

SSID:

Xiaomi_8BA1

Password:

12345678

OK

Turn on the Bluetooth of the mobile phoneand WIFI function

Bluetooth pairing successful, search fornearby SSID completed

Finished configuring SSID

Cloud connection successful

Network configuration

Step 1:
Click the "Network" button in the upper right corner of the Configure WiFi page, and click the "Network" option to bring up the configuration pop-up box.

Tip: The default display is "Automatic DHCP".

Set up WIFI

SN:609W6DHF332A011

SSID:

Xiaomi_8BA1

Password:

12345678

OK

Turn on the Bluetooth of the mobile phoneand WIFI function

Bluetooth pairing successful, search fornearby SSID completed

Finished configuring SSID

Cloud connection successful

Step 2:

To configure DHCP manually, please select "Manual DHCP" in the drop-down box and enter the relevant information correctly, click Confirm.

Set up WIFI

SN:609W6DHF332A011

Network Configuration

Automatic DHCP

IP

Subnet mask:

Gateway:

OK

Set up WIFI

SN:609W6DHF332A011

SSID:

Xiaomi_8BA1

Password:

12345678

Success

OK

Turn on the Bluetooth of the mobile phoneand WIFI function

Bluetooth pairing successful, search fornearby SSID completed

Finished configuring SSID

Cloud connection successful

The manual is updated frequently. Please scan the code to download the latest version.



E-mail: service@fox-ess.com
Website: www.foxesscloud.com